



ΕΘΝΙΚΟ ΚΑΙ ΚΑΠΟΔΙΣΤΡΙΑΚΟ  
ΠΑΝΕΠΙΣΤΗΜΙΟ ΑΘΗΝΩΝ - ΙΑΤΡΙΚΗ  
ΣΧΟΛΗ



Θεραπευτική Κλινική

## Αρρυθμίες

*Χατζίδου Σοφία – Επιμελήτρια Α΄*

Αθήνα, 31 Μαρτίου, 2018

# Εμφυτεύσιμες Συσκευές

# The European Lead Extraction ConTrolled (ELECTRa) study: a European Heart Rhythm Association (EHRA) Registry of Transvenous Lead Extraction Outcomes

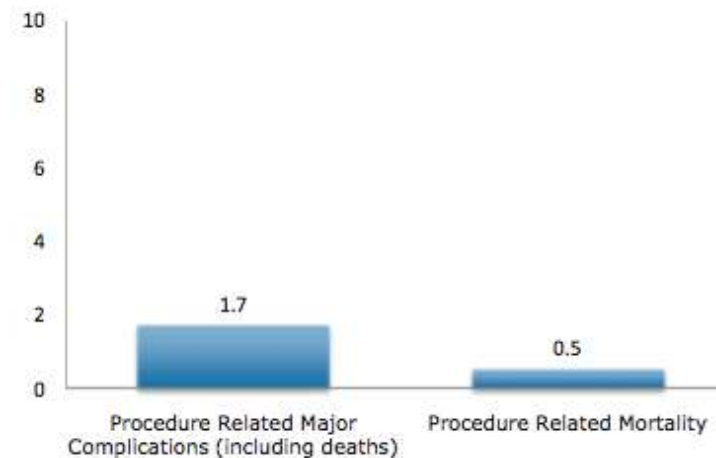
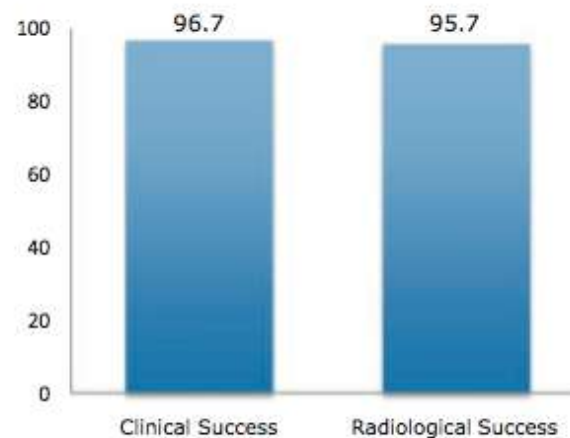
## ELECTRa

European Lead Extraction ConTrolled Registry

73 centers in 19 European countries  
3510 patients with 6493 leads  
75.7% pacing leads & 24.3% ICD leads

Transvenous Lead Extractions  
Indications  
52.8% infective & 47.3 % non-infective

## OUTCOMES



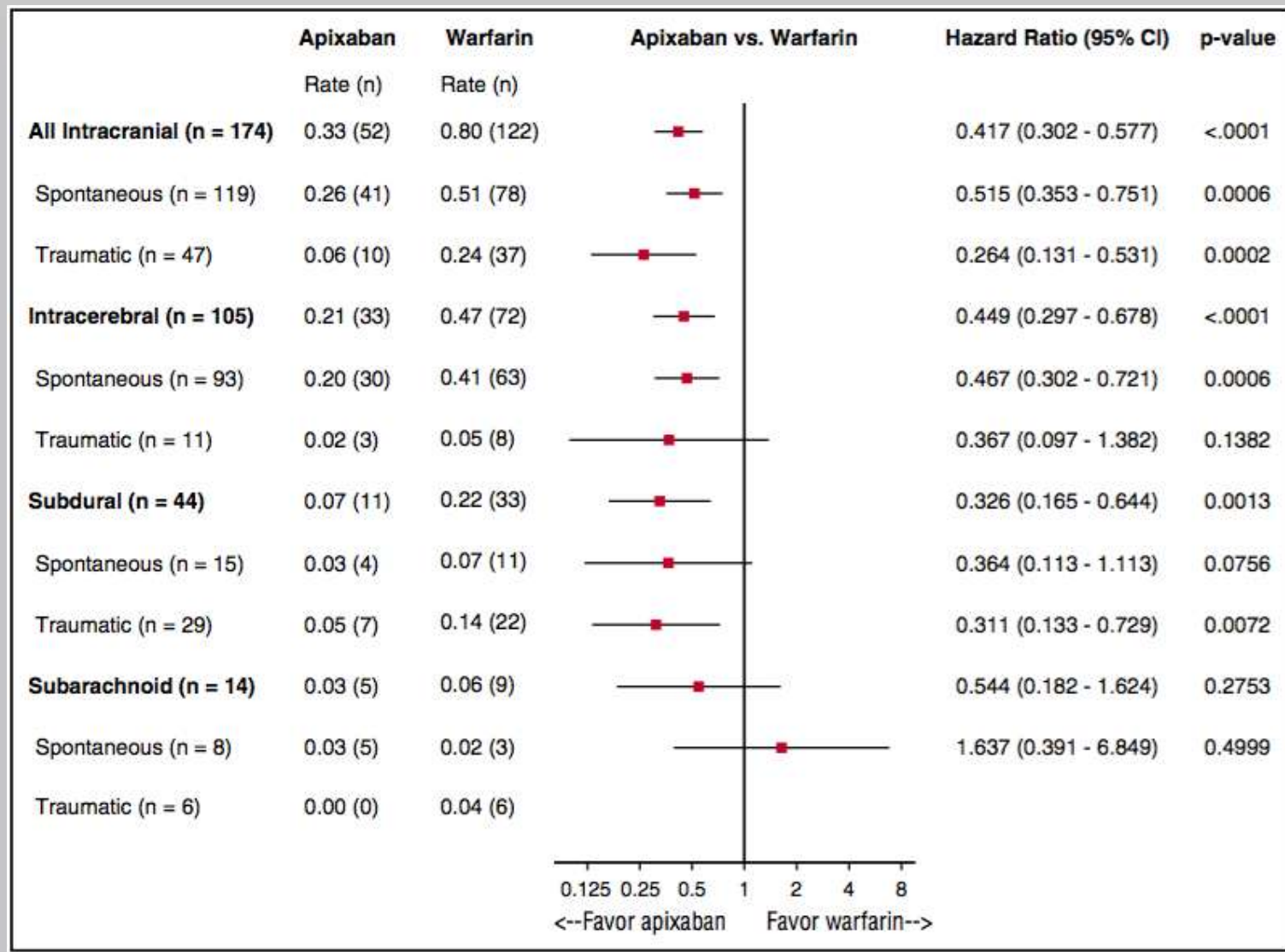
## Assessing the Risks Associated with MRI in Patients with a Pacemaker or Defibrillator (The MagnaSafe Registry)

**Table 2. Primary End Points.**

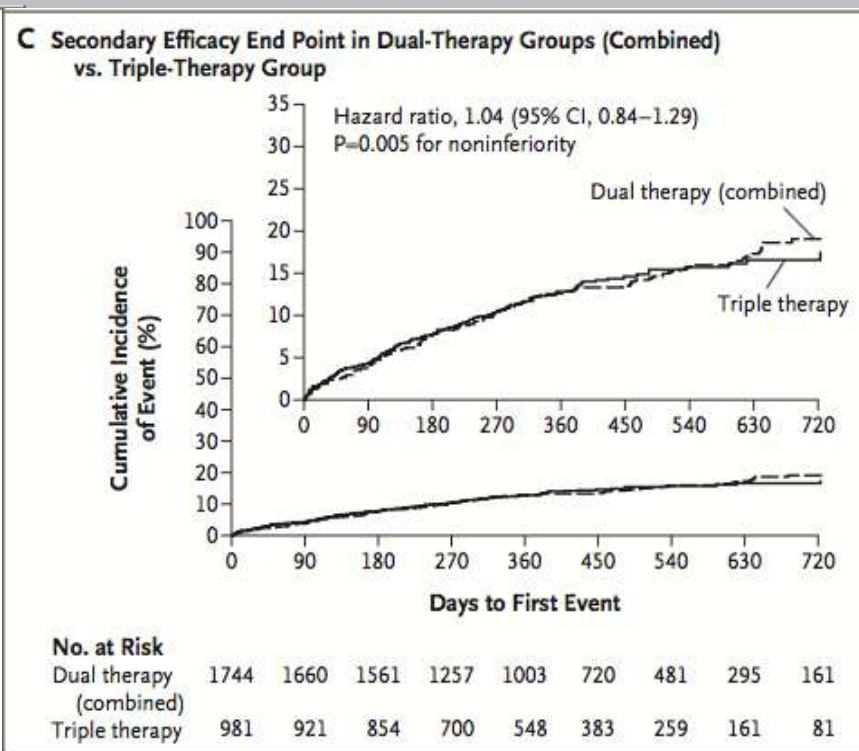
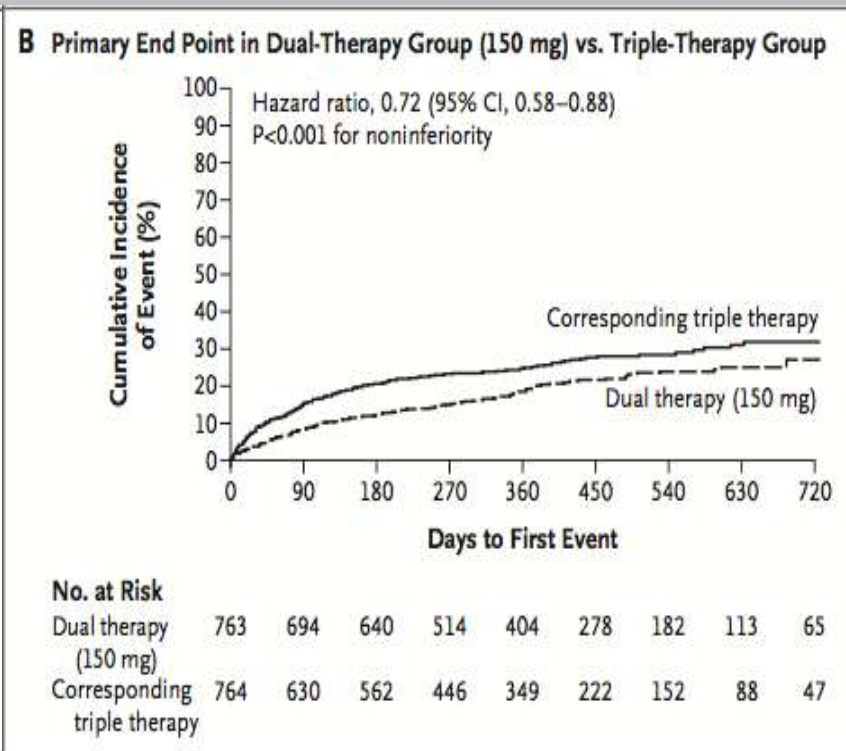
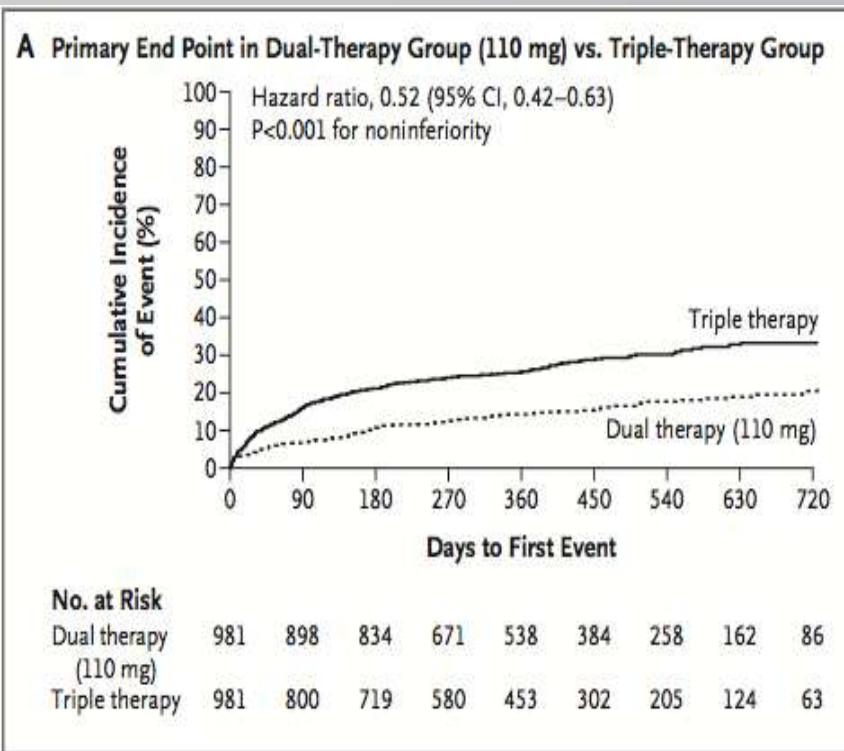
End-Point Event	Pacemaker		ICD	
	Events/Cases	% (95% CI)	Events/Cases	% (95% CI)
Death during the MRI examination	0/1000	0 (0–0.4)	0/500	0 (0–0.8)
Generator failure requiring immediate replacement	0/1000	0 (0–0.4)	1/500*	0.2 (0.04–1.1)
Lead failure requiring immediate replacement†	0/1926	0 (0–0.2)	0/997	0 (0–0.4)
Loss of capture during the MRI examination‡	0/280	0 (0–1.4)	NA	NA
Observed atrial arrhythmia	5/1000	0.5 (0.2–1.2)	1/500	0.2 (0.04–1.1)
Observed ventricular arrhythmia	0/1000	0 (0–0.4)	0/500	0 (0–0.8)
Electrical reset§	6/1000	0.6 (0.3–1.3)	0/500	0 (0–0.8)

# Υπερκοιλιακές Αρρυθμίες - Αντιπηκτικά

# Intracranial hemorrhage in patients with atrial fibrillation receiving anticoagulation therapy (ARISTOTLE trial)



# Dual Antithrombotic Therapy with Dabigatran after PCI in Atrial Fibrillation



# Κολπική μαρμαρυγή

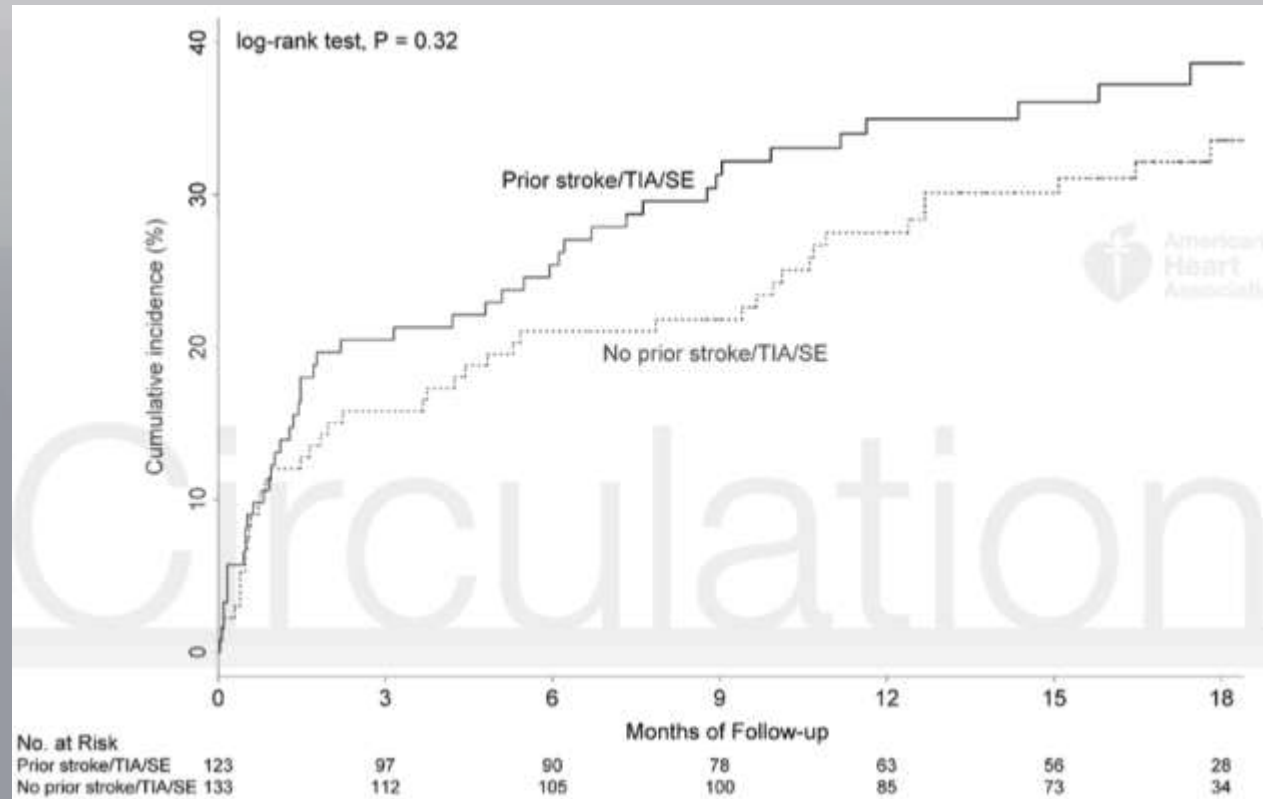
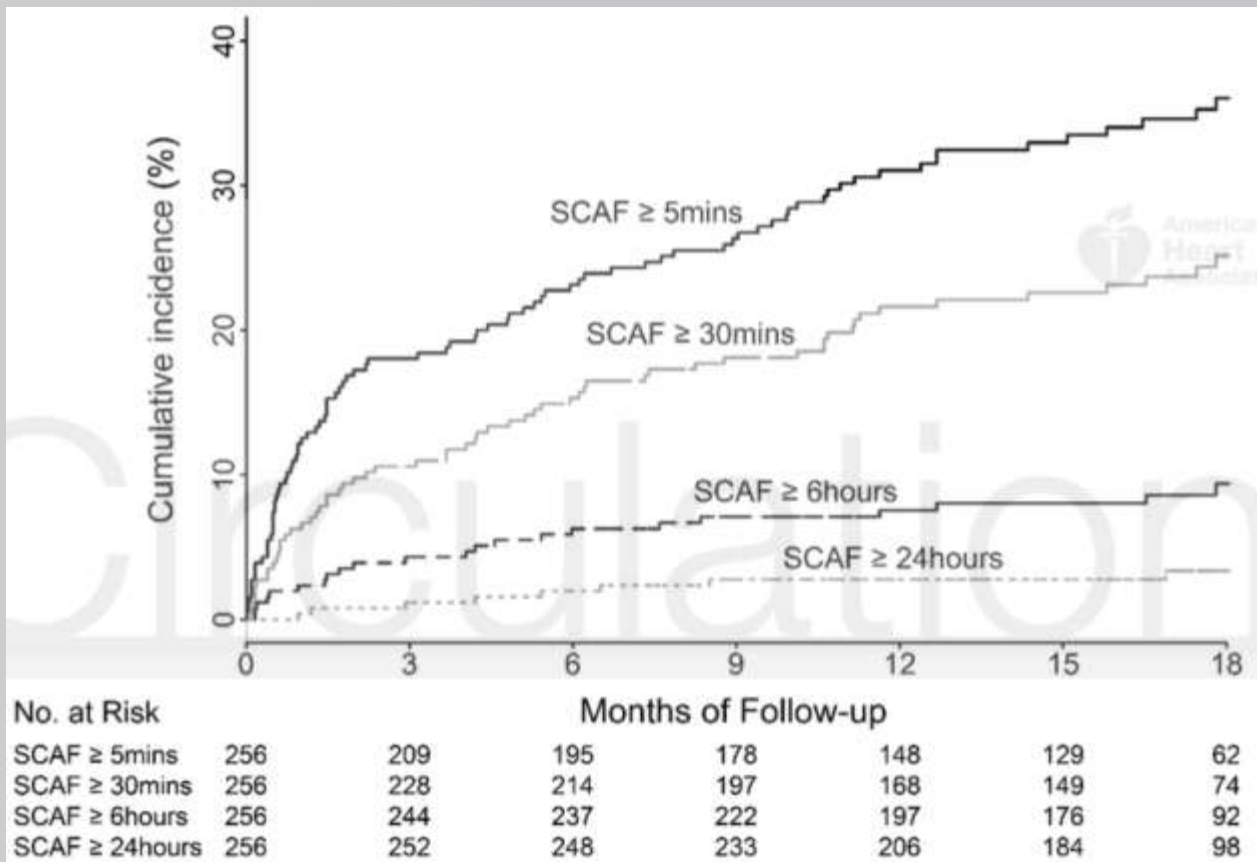


# Subclinical Atrial Fibrillation in Older Patients

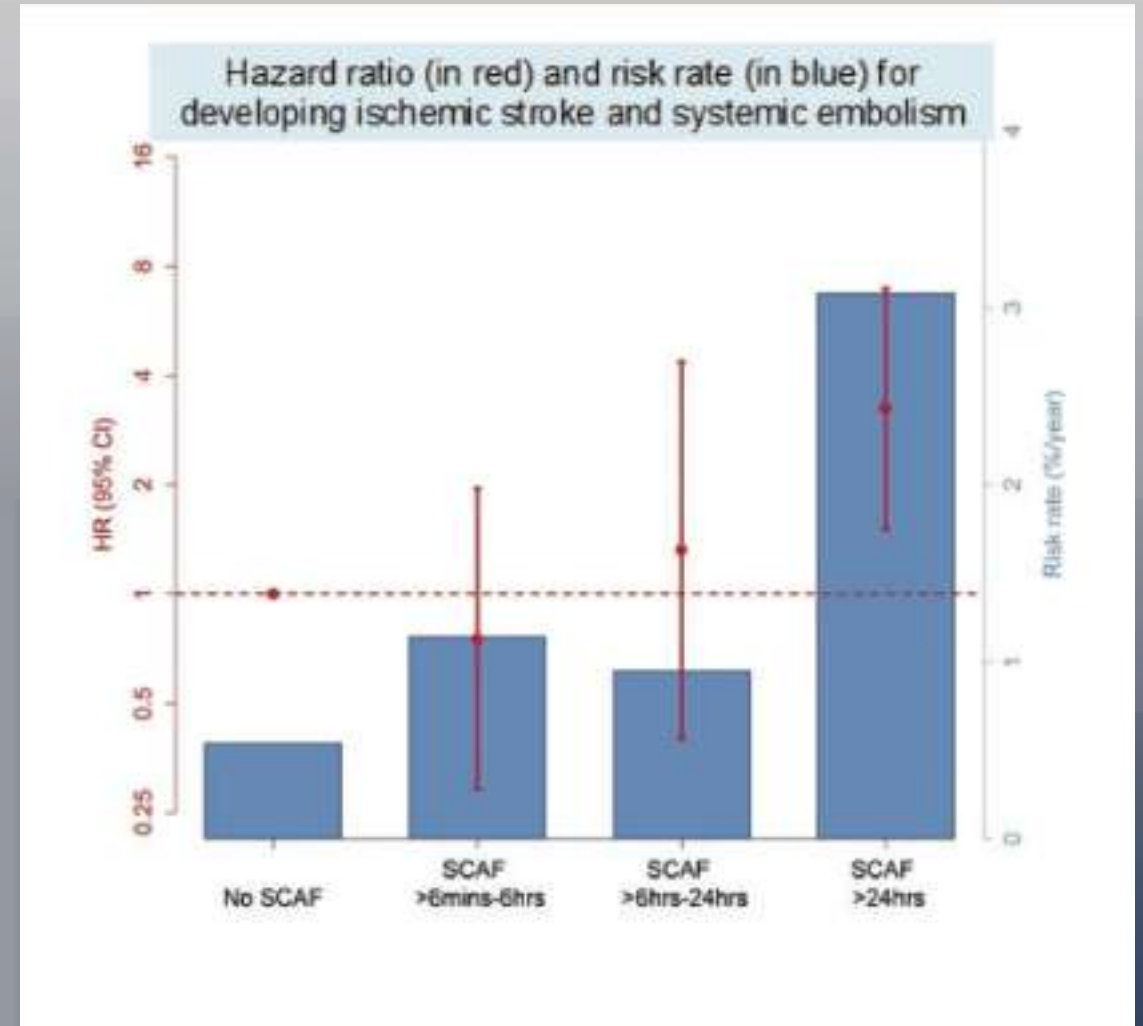
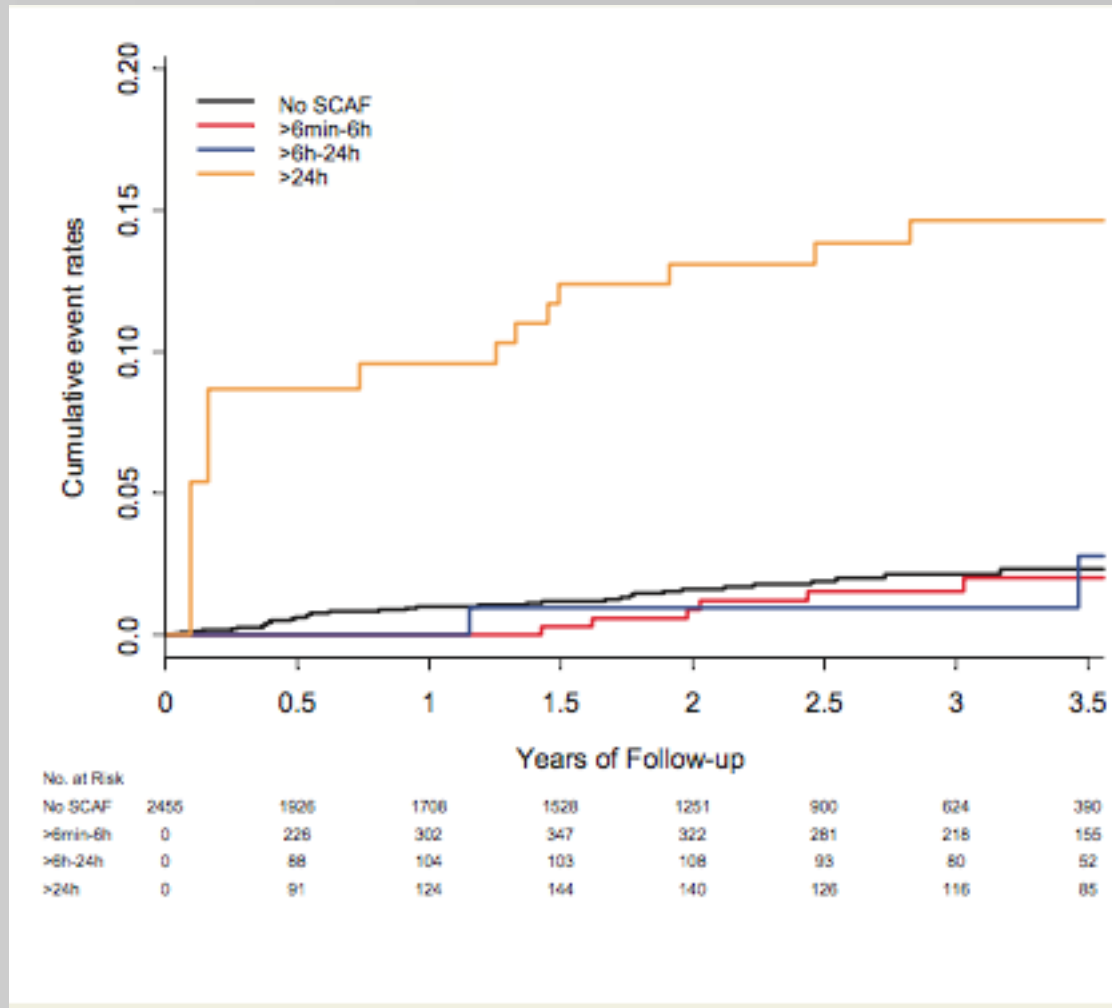
The study population included patients:

- $\geq 65$  years old
- CHA2DS2-VASc score of  $\geq 2$ , **or** a clinical diagnosis of obstructive sleep apnea, **or** a body-mass index  $> 30$

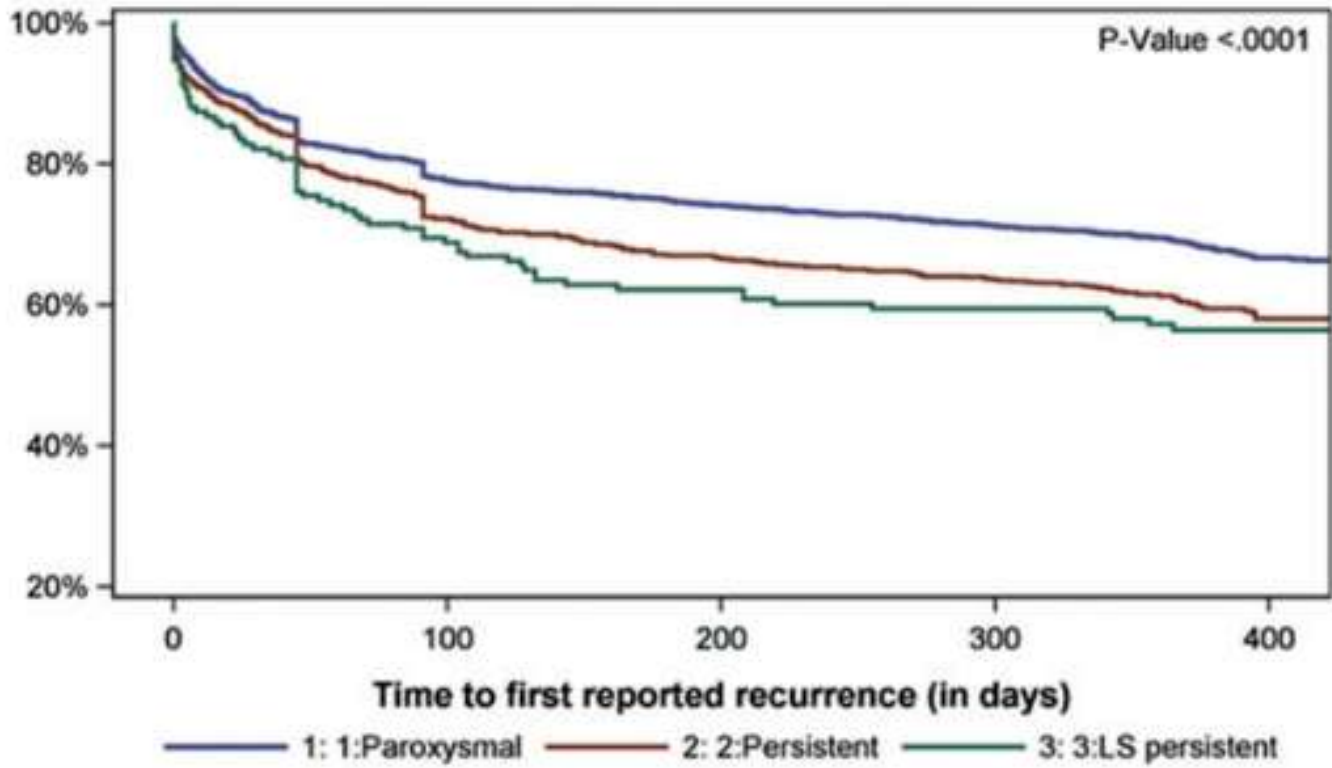
# Subclinical Atrial Fibrillation in Older Patients (continue)



# Duration of device-detected subclinical atrial fibrillation and occurrence of stroke in ASSERT



# Contemporary management of patients undergoing atrial fibrillation ablation: in- hospital and 1-year follow-up findings from the ESC-EHRA atrial fibrillation ablation long-term registry



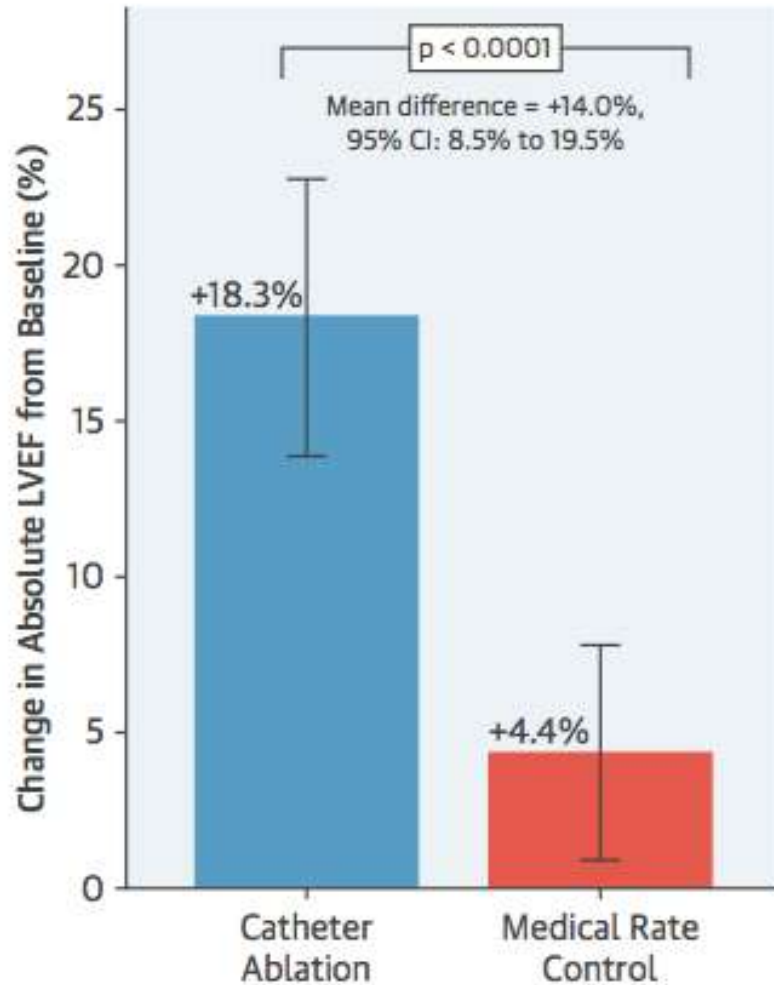
Number of Subjects at risk

1: 1:Paroxysmal	2163	1649	1555	1451	406
2: 2:Persistent	857	614	560	516	137
3: 3:LS persistent	151	104	93	88	33

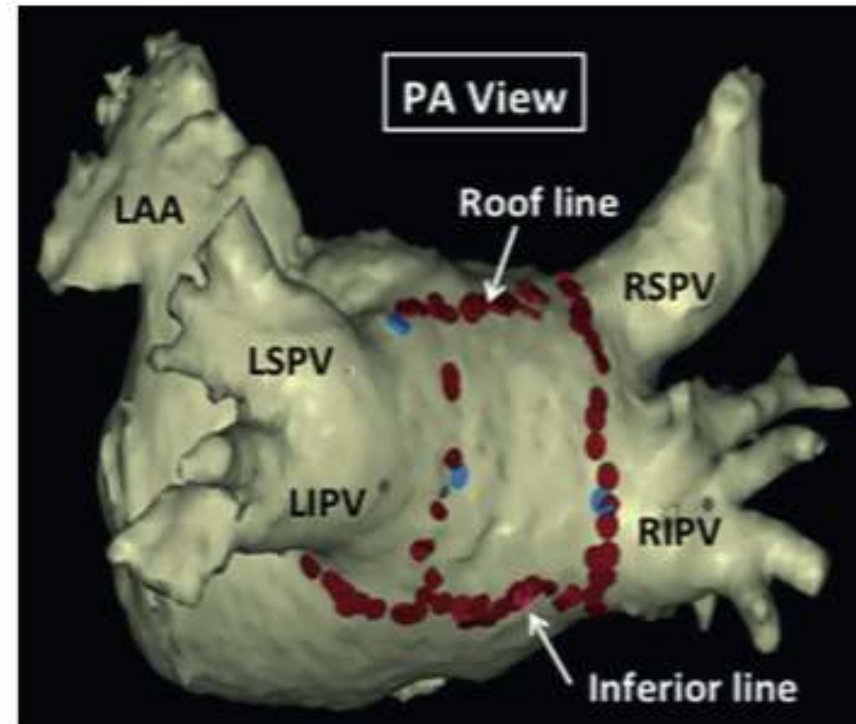
- Success rate: 73.6 %
- Complications: 7.8%

# Catheter Ablation Versus Medical Rate Control in Atrial Fibrillation and Systolic Dysfunction (The CAMERA-MRI Study)

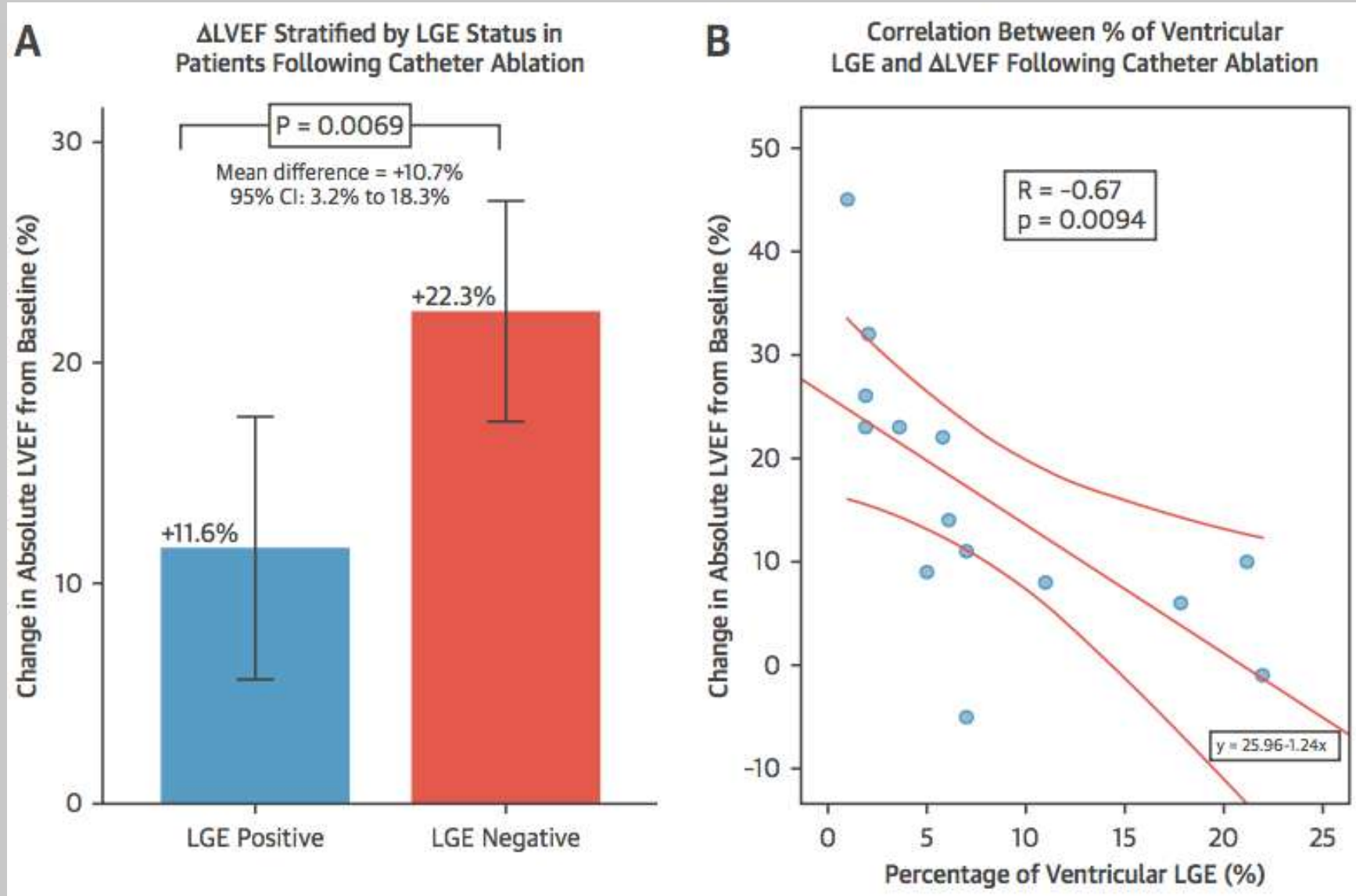
**A** Primary Endpoint: Change in LVEF at Baseline and 6 Months by Treatment Arm



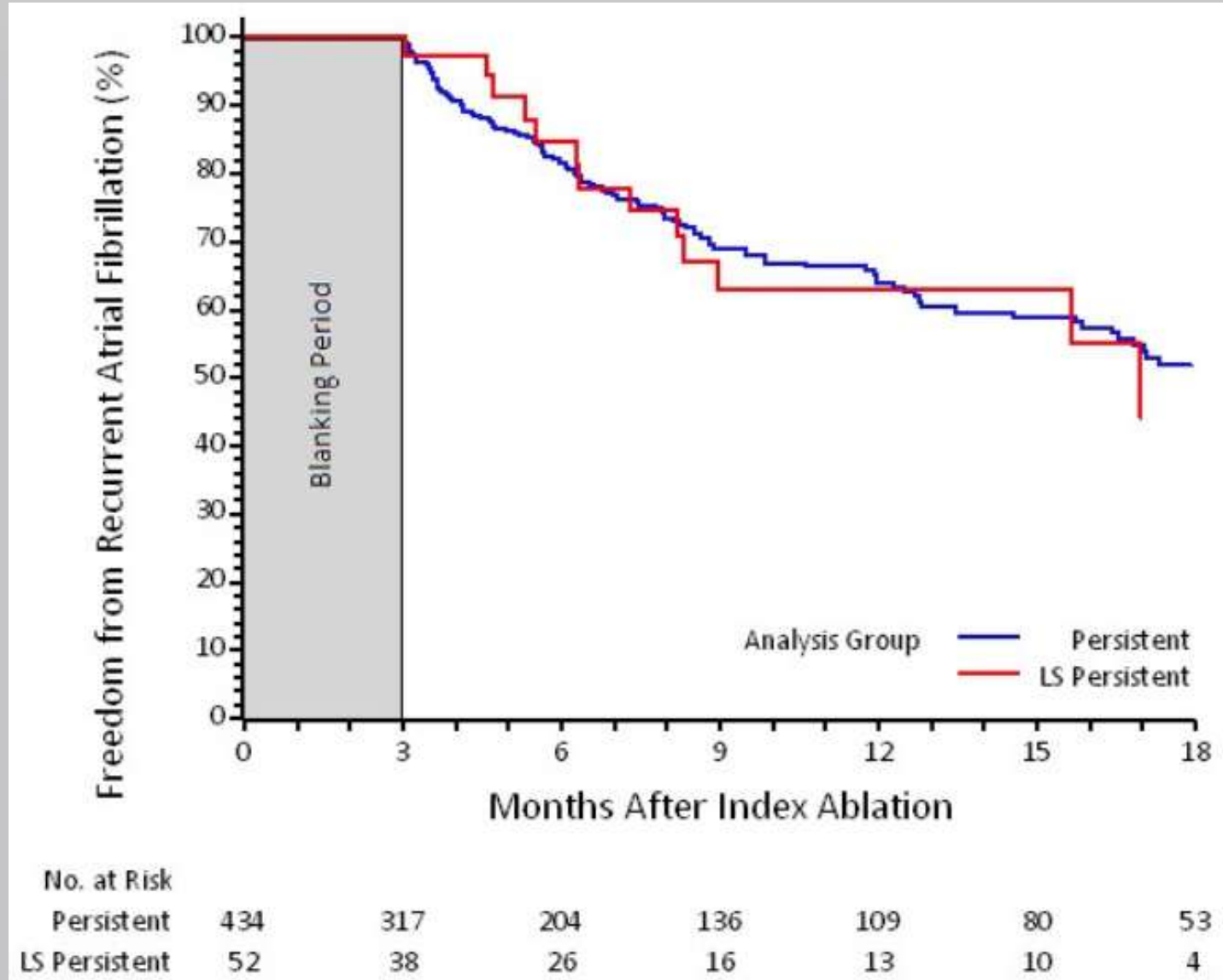
**B** Catheter Ablation Lesion Set in Left Atrium: Pulmonary Vein and Posterior Wall Isolation



# Catheter Ablation Versus Medical Rate Control in Atrial Fibrillation and Systolic Dysfunction - The CAMERA-MRI Study (continue)



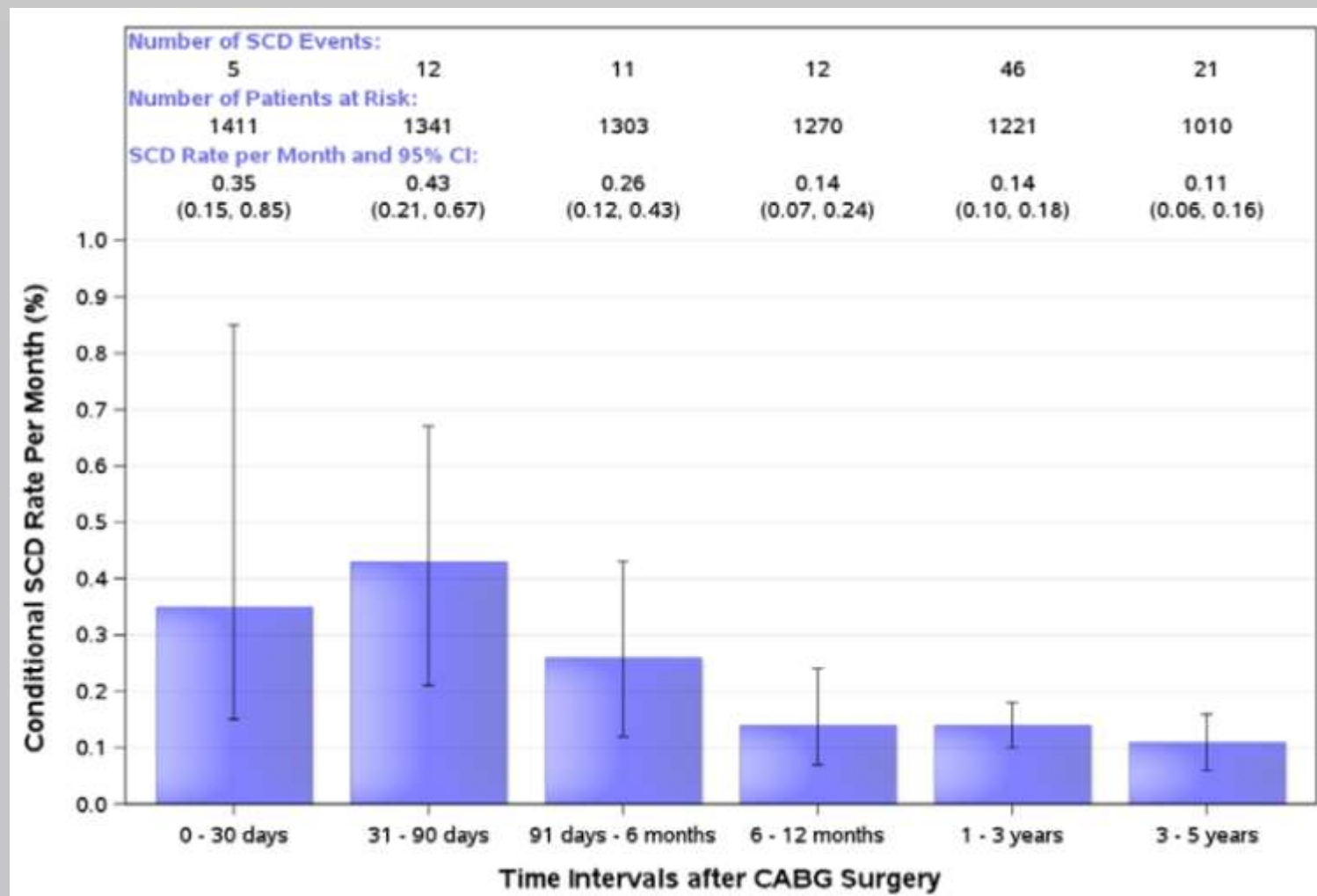
# Pulmonary Vein Isolation Cryoablation for Persistent and Long-Standing Persistent Atrial Fibrillation Patients



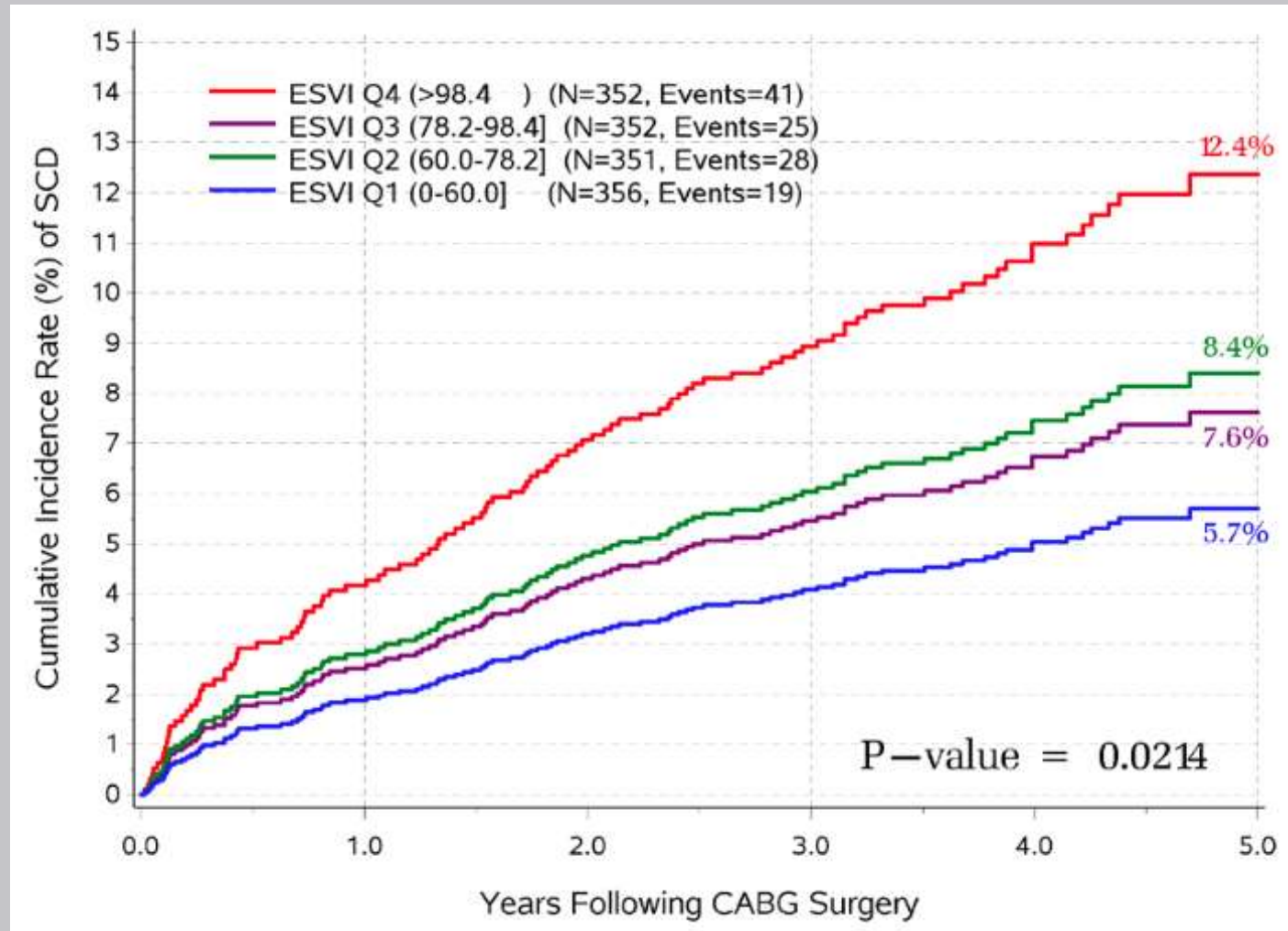
# Κοιλιακές Αρρυθμίες – Αιφνίδιος Καρδιακός Θάνατος



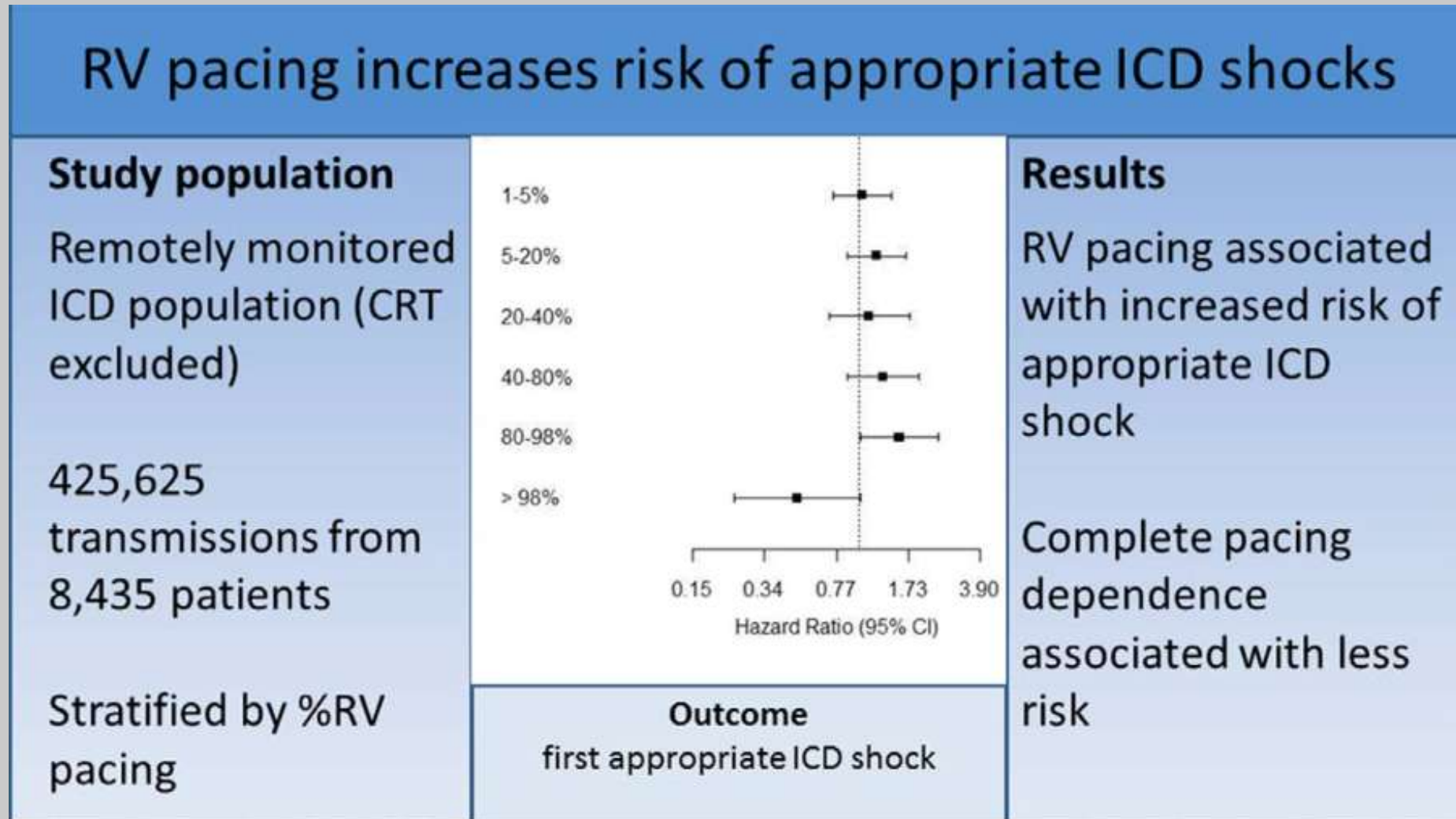
# Sudden Cardiac Death in Patients With Ischemic Heart Failure Undergoing CABG ( results from STICH Randomized Clinical Trial)



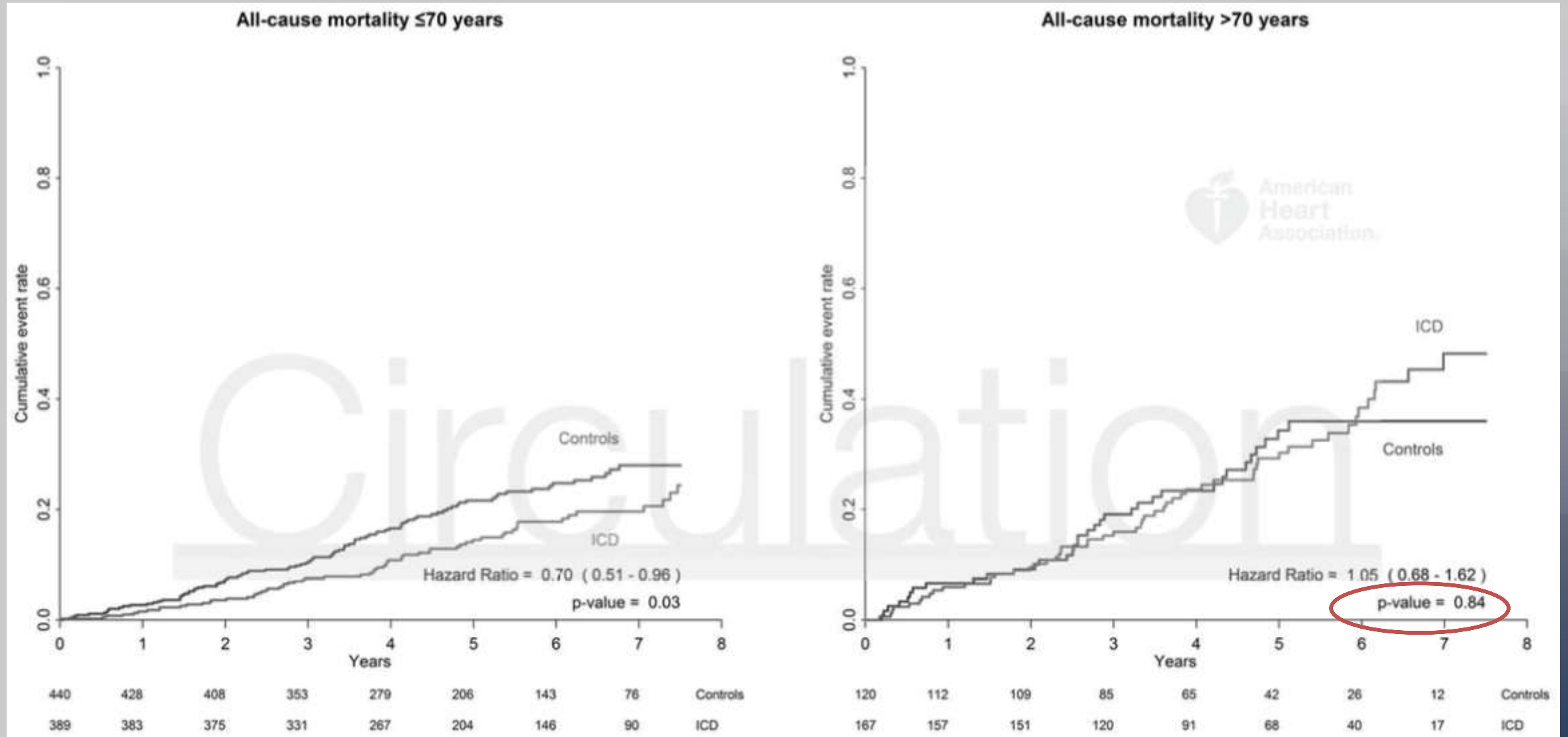
# Sudden Cardiac Death in Patients With Ischemic Heart Failure Undergoing CABG - results from STICH Randomized Clinical Trial (continue)



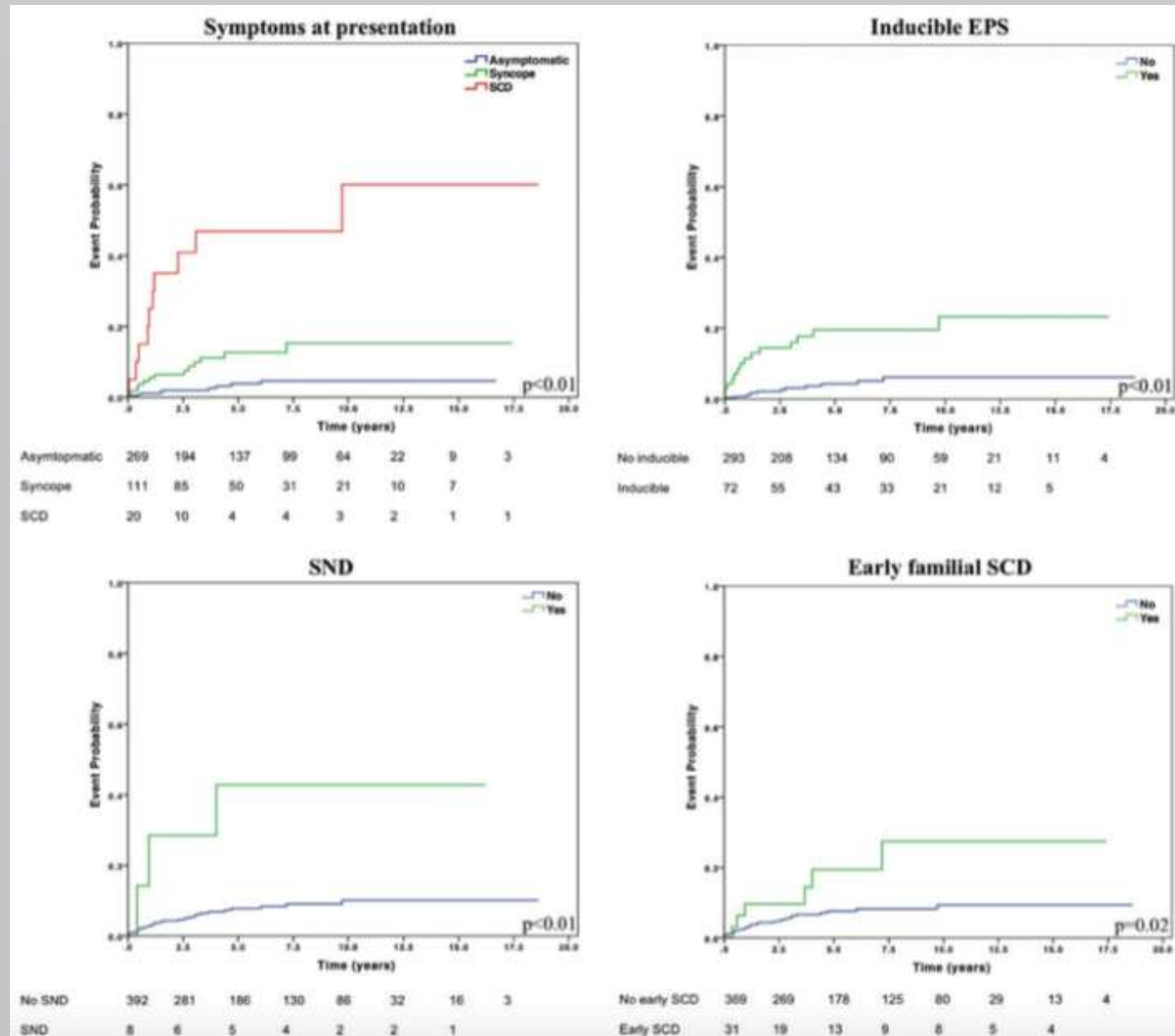
# Right Ventricular Pacing Increases Risk of Appropriate ICD Shocks Asymmetrically



# Age and Outcomes of Primary Prevention ICDs in Patients with Non-Ischemic Systolic Heart Failure



# A score model to predict risk of events in patients with Brugada Syndrome



# A score model to predict risk of events in patients with Brugada Syndrome (continue)

